



XPOWERFLEX
INVERTER

UP TO 21 SEER

Flexible Matching System

The ultimate in cooling and heating comfort





Maximum flexibility at your reach.



Energy Efficient — DC Inverter technology with twin rotary compressor and DC fan motor, allows systems to achieve excellent energy efficiencies up to 20 SEER.



Quiet Operation — Ideal for spaces where people spend large amounts of time, and need low sound levels.



Environmentally Friendly — Washable filters on indoor units and the use of R410A refrigerant reduce harmful effects on the earth.

Built to last — The outdoor unit is built to last with a coil golden anti-corrosive treatment, which prolongs the unit's performance and sustains severe climates.

TECHNICAL SPECIFICATIONS

Indoor Units



FLOOR / UNDER CEILING MOUNTED SPLIT



- ▶ Slim Profile
- ▶ Two installation method (Floor / Ceiling)
- ▶ Auto-cool-dry-heat Fan
- ▶ Low sound level
- ▶ Sleep Mode
- ▶ Automatic air swing in both direction
- ▶ Three fan speed
- ▶ Auto restart function
- ▶ Drain pipe Connection - Left or Right
- ▶ On/off, alarm ports
- ▶ Optional Wired controller | Weekly controller | Central controller ports

INDOOR MODEL			40QZL018DS	40QZL024DS	40QZL036DS	40QZL048DS	40QZL058DS
Power supply		V-ph-Hz	208-230V~, 50/60Hz, 1Ph	208-230V~, 50/60Hz, 1Ph	208-230V~, 50/60Hz, 1Ph	208-230V~, 50/60Hz, 1Ph	208-230V~, 50/60Hz, 1Ph
Cooling	Capacity	Btu/h	18000(2700-21000)	24000(4100-28000)	36000(10000-41000)	48000(13600-50000)	54000(10800-65000)
	EER	Btu/W	12.5	12.5	8.0	9.3	9.8
	SEER		20	20	16	17.8	18
Heating	Capacity	Btu/h	18000(3000-24000)	24400(4100-29500)	38000(9000-45000)	50000(14300-55000)	60000
	COP	W/W	3.2	3.8	2.8	3.2	3.2
Minimum circuit ampacity		A	15	18	30	35	36
Max.fuse		A	20	25	50	50	15
Indoor air flow(Hi/Med/Lo)		m3/h	982/885/790	1290/1204/1017	1762/1559/1084	2300/1900/1700	2353/1749/1352
Indoor noise level (sound pressure) (Hi/Mid/Lo)		dB(A)	47/44/39	53/48/42	54/49/43	57/54/52	55/46/49
Indoor unit	Dimension (WxDxH)	mm	1068x675x235	1068x675x235	1285x675x235	1650x675x235	1650x675x235
	Packing (WxDxH)	mm	1145x755x313	1145x755x313	1360x755x313	1725x755x313	1725x755x313
	Net/Gross weight	kg	25/29.7	26.5/31.4	31.3/37	38/44	46/50
Design pressure		PSIG	550/340 PSIG				
Condensate Drain Connection		mm	ODΦ25				
Refrigerant piping	Liquid side/Gas side	mm(inch)	Φ6.35/Φ12.7(1/4"/1/2")	Φ9.52/Φ15.9(3/8"/5/8")	Φ9.52/Φ15.9(3/8"/5/8")	Φ9.52/Φ15.9(3/8"/5/8")	Φ9.52/Φ19(3/8"/5/8")
Controller			Remote control				
Room temperature Range	Cooling	°C	17~32				
	Heating	°C	0~30				
Operation temperature		°C	17~30				
Qty'per 20' /40' /40'HQ			102/220/252	102/220/252	92/188/213	72/147/167	72/147/167



CASSETTE SPLIT



- ▶ 360° air flow
- ▶ Advantage duct design for nearby room**
- ▶ Easy malfunction checking - Error code on LED display
- ▶ Independent dehumidification
- ▶ Auto Restart
- ▶ 3 Fan speeds
- ▶ Built-in drain pump
- ▶ Sleep Mode
- ▶ On/off, alarm ports
- ▶ Optional Wired controller / Weekly controller/ Central controller ports*

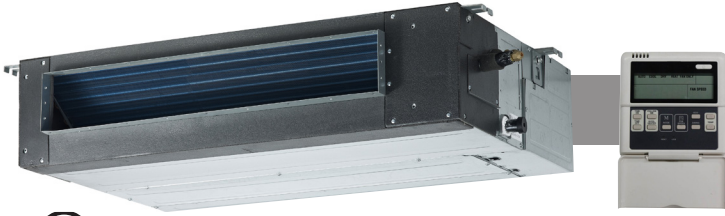
**Only available on the 24, 36 and 48 KBTU models

*Wired control part number 17317100A26817 (sold separately)

INDOOR MODEL			40QTD018DS	40QTD024DS	40QTD036DS	40QTD048DS
CASSETTE PANEL MODEL			40CAS-S4	40CAS-L5	40CAS-L5	40CAS-L5
Power supply		V-ph-Hz	208-230V~, 50/60Hz, 1Ph	208-230V~, 50/60Hz, 1Ph	208-230V~, 50/60Hz, 1Ph	208-230V~, 50/60Hz, 1Ph
Cooling	Capacity	Btu/h	18000(2700-21000)	24000(4100-28000)	36000(10000-41000)	48000(13600-50000)
	EER	Btu/W	12.5	12.5	9.0	9.5
	SEER		20	20	17.5	16.8
Heating	Capacity	Btu/h	18000(3000-24000)	24400(4100-29500)	38000(9000-45000)	50000(14300-55000)
	COP	W/W	3.2	3.2	3.0	3.1
Minimum circuit ampacity		A	15	18	30	35
Max.fuse		A	20	25	50	50
Indoor air flow (Hi/Med/Lo)		m3/h	951/821/705	1189/1082/974	1861/1628/1375	2000/1750/1450
Indoor noise level (sound pressure) (Hi/Mid/Lo)		dB(A)	44/39/36	51/47/43	55/52/49	55/52/49
Indoor unit	Dimension (W x Dx H) (body)	mm	570x570x260	840x840x205	840x840x245	840x840x287
	Packing (W x Dx H) (body)	mm	655x655x290	900x900x217	900x900x257	900x900x292
	Dimension (W x Dx H) (panel)	mm	647x647x50	950x950x55	950x950x55	950x950x55
	Packing (W x Dx H) (panel)	mm	715x715x123	1035x1035x90	1035x1035x90	1035x1035x90
	Net/Gross weight(body)	kg	16.1/18.7	21/24.6	26.4/30	28.7/32.9
	Net/Gross weight(panel)	kg	2.5/4.5	5/8	5/8	5/8
Design pressure		PSIG	550/340 PSIG			
Condensate Drain Connection		mm	ODΦ25	ODΦ32	ODΦ32	ODΦ32
Refrigerant piping		Liquid side/ Gas side	mm	Φ6.35/Φ12.7(1/4"/1/2")	Φ9.52/Φ15.9(3/8"/5/8")	Φ9.52/Φ15.9(3/8"/5/8")
Controller			Remote control			
Room temperature Range	Cooling	°C	17~32			
	Heating	°C	0~30			
Qty'per 20' /40' /40'HQ			234/488/566	148/312/342	128/268/294	100/212/238

TECHNICAL SPECIFICATIONS

Indoor Units



DUCTED SPLIT



- ▶ Slim profile, low height
- ▶ Quick & easy to install
- ▶ Flexible intake from back & below
- ▶ Auto restart function
- ▶ Timer
- ▶ Sleep mode
- ▶ Flange and fresh air hole standard
- ▶ Standard & Easy to replace filters
- ▶ Independent dehumidification
- ▶ Adjustable external static pressure
- ▶ On/off, alarm ports
- ▶ Wired controller / Weekly controller/ Central controller ports

*Wired control part number 17317100A26817 (sold separately)

INDOOR MODEL		40QSS018DS	40QSS024DS	40QSS036DS	40QSS048DS	40QSS058DS	
Power supply		V-ph-Hz	208-230V,1Ph,50/60Hz	208-230V,1Ph,50/60Hz	208-230V,1Ph,50/60Hz	208-230V,1Ph,50/60Hz	208-230V,1Ph, 50/60Hz
Cooling	Capacity	Btu/h	18000(6400~18800)	24000(11000~24400)	36000(14000~38000)	48000(14500~50000)	57000(11500~70000)
	EER	Btu/W	12.5	12.5	9.0	9.2	10
	SEER		19.0	21.5	16.5	17.4	18
Heating	Capacity	Btu/h	18000(6000-18900)	24400(10200-29400)	40000(14000-42000)	49500(15000-55000)	62000
	COP	W/W	3.14	3.52	3.37	3.52	3.6
Minimum circuit ampacity		A	15	18	35	35	15
Max.fuse		A	20	25	50	50	50
Indoor air flow (Hi/Med/Lo) (No duct)		m3/h	900/765/630	1318.3/1178.2/739.3	1839/1551/1195	2088.3/1752.7/1214.9	3665 /2906 /2145
ESP	Range	Pa	0-100	0-160	0-160	0-160	0-200
Indoor noise level (Hi/Med/Lo)		dB(A)	41.5/38.5/36	44/41/34	45.5/42/38.5	50.5/49.5/46	57/51/54
Indoor unit	Dimension (WxDxH)	mm	880x674x210	1100x774x249	1360x774x249	1200x874x300	1400x858x440
	Packing(WxDxH)	mm	1070x725x270	1305x805x305	1570x805x305	1405x915x355	1605x910x505
	Net/Gross weight	kg	24.0/29.5	39.5/47.0	48.5/55.5	54.5/64.5	74/86
Design pressure		PSIG	550/340 PSIG				
Condensate Drain Connection		mm	ODΦ25				
Refrigerant piping	Liquid side/ Gas side	mm	Φ6.35/Φ12.7(1/4"/1/2")	Φ9.52/Φ15.9(3/8"/5/8")	Φ9.52/Φ15.9(3/8"/5/8")	Φ9.52/Φ15.9(3/8"/5/8")	Φ9.52/Φ19 (3/8"/3/4")
Controller			Wired control				
Room temperature Range	Cooling	°C	17~32				
	Heating	°C	0~30				
Qty'per 20' /40' /40'HQ			120/264/297	77/161/184	49/105/120	62/130/149	35/72/86



58K



18K to 36K



UNIVERSAL OUTDOOR UNIT - HEAT PUMP

- ▶ Inverter Control
- ▶ Sound Levels down to 60 DB
- ▶ R410A Refrigerant
- ▶ Golden Anti-Corrosive Treatment

OUTDOOR MODELS		38QUA018DS	38QUA024DS	38QUA036DS	38QUA048DS	38QUA058DS	
Power supply	V- Ph-Hz	208-230V~, 50/60Hz, 1Ph	208-230V~, 50/60Hz, 1Ph	208-230V~, 50/60Hz, 1Ph	208-230V~, 50/60Hz, 1Ph	208-230V~, 50/60Hz, 1Ph	
Max. fuse	A	20.0	25.0	50.0	50	50	
Minimum circuit ampacity	A	15.0	18.0	30.0	35	36	
Outdoor air flow (Max.)	m3/h	2500	4000	4300	7600	7500	
Outdoor noise level	dB(A)	60	61	66	62.5	64	
Metering Device		Capillary +EXV					
Outdoor unit	Dimension (WxDxH)	mm	845x363x702	946x410x810	946x410x810	952x415x1333	952x415x1333
	Packing (WxDxH)	mm	965x395x755	1090x500x875	1090x500x875	1095x495x1480	1095x495x1480
	Net/ Gross weight	kg	43.2/46.5	62/67.4	67.4/73	98.6/111.6	102.1/115.4
Refrigerant type/Quantity	Oz	R410A/68.8	R410A/82.9	R410A/108	R410A/148.2	R410A/163	
Design pressure	PSIG	550/340					
Refrigerant piping	Liquid side/ Gas side	mm(inch)	Φ6.35/Φ12.7(1/4"/1/2")	Φ9.52/Φ15.9(3/8"/5/8")	Φ9.52/Φ15.9(3/8"/5/8")	Φ9.52/Φ15.9(3/8"/5/8")	Φ9.52/Φ19(3/8"/3/4")
	Max. pipe length	m	30	50	65	65	65
	Max. difference in level	m	20	25	30	30	30
Ambient temperature	Cooling	°C	-25~50	-25~50	-15~50	-15~50	-25~50
	Heating	°C	-25~30	-25~30	-15~30	-15~30	-25~30
Qty'per 20' /40' /40'HQ	Outdoor	102/216/216	44/96/144	44/96/144	22/48/48	22/48/48	



A Century of Innovation.

Built on Willis Carrier's invention of modern air conditioning in 1902, Carrier is the world leader in heating, air-conditioning and refrigeration solutions. We constantly build upon our history of proven innovation with new products and services that improve global comfort and efficiency. Carrier Ductless Systems deliver efficiency, performance and control thanks to advanced technology. When it comes to creating comfort, one size or system may not fit all, but one name does: **Carrier**.

www.carriercca.com